



PROIZVODNJA FLEKSIBILNIH CREVA



O nama/About us



CORONA IMPEX osnovana je 2009. godine, od kada se i aktivno bavimo proizvodnjom PVC creva i profila. Širokom paletom svojih proizvoda, počev od jednoslojnih baštenskih, preko armiranih do spiralnih creva postali smo idealan partner za one koji u jednom dobavljaču traže kompletan asortiman PVC creva.

- Visokokvalitetni proizvodi
- Prvoklasna i brza isporuka
- Posvećenost našim kupcima
- Tehnološka inovacija

PROIZVODNJA PVC CREVA I PROFILA

Za proizvodnju naših proizvoda koristimo najkvalitetnije materijale najpoznatijih evropskih kompanija. Svi zaposleni u **CORONA IMPEX** doo konstantno rade na daljem razvoju i proširenju asortimana proizvoda i usluga, tako da odgovaraju najnovijim tehničkim standardima i zahtevima tržišta, a sve u cilju da za postojeće poslovne partnere ostanemo, a za buduće postanemo pouzdan partner. Pozivamo Vas da se i Vi priključite našoj distributivnoj mreži i da uz vrhunski kvalitet naših proizvoda, pristupačne cene i odlične partnerske uslove saradnje ostvarite svoj poslovni cilj.



CORONA IMPEX was founded in 2009, since when we have been actively engaged in the production of PVC hoses and profiles. With a wide range of our products, from single-layer garden hoses, through reinforced to spiral hoses, we have become an ideal partner for those who are looking for a complete range of PVC hoses in one supplier.

- High quality products
- First-class and fast delivery
- Commitment to our customers
- Technological innovation

MANUFACTURE OF PVC HOSES AND PROFILES

For the production of our products we use the highest quality materials from the most famous European companies. All employees of **CORONA IMPEX** doo are constantly working on further development and expansion of the range of products and services, so that they meet the latest technical standards and market requirements, all in order to remain for existing business partners and become a reliable partner for the future. We invite you to join our distribution network and to achieve your business goal with the top quality of our products, affordable prices and excellent partnership conditions.



ARMIRANA BAŠTENSKA CREVA - PROFLEX PE 10/20 bar

KAREKTERISTIKE:

- Troslojno crevo
- Izrađena od mekog PVC-a
- Ojačana PE filamentom
- Glatke unutrašnjosti i spoljašnosti
- Beli unutrašnji sloj za upotrebu u prehrambenoj industriji
- Dobre otpornosti na veliko broj hemikalija
- Oslobođena kadmijuma, barijuma i olova
- Formulacija pogodna za kontakt sa hranom
- UV stabilna
- Temperatura primene od -10°C do +60°C



PRIMENA:

Zalivanje vrtova, bašti, parkova, fudbalskih terena, građevinskih radova, pranje plovila, transfer prehrambenih tečnosti itd

TEHNIČKI PODACI:

I.D. mm	O.D. mm	Radni pritisak	Pritisak pucanja	Radius savijanja	Dužina izrade
12,5	17,5	10	24	50	25/50/100
18	23,5	8	18	115	25/50/100
24	31	6	12	150	25/50

Tolerancija dužine +/- 2%, tolerancija unutrašnjeg prečnika +/-3%
Radni i rasprskujući pritisak važi pri upotrebi na 20°C

BOJE IZRADE:





REINFORCED GARDEN HOSES PE 10/20 bar

FEATURES:

- Three-layer hose
- Made of soft PVC
- Reinforced with PE filament
- Smooth interiors and exteriors
- Good resistance to a large number of chemicals
- Cadmium free, barium and lead.
- Formulation suitable for contact with food
- UV stable
- White inner layer for use in the food industry
- Application temperature from -10 ° C to + 60 ° C

USE:

Watering gardens, orchards, parks, football fields, construction works, washing boats, transferring food liquids etc.



TECHNICAL DATA

I.D. mm	O.D. mm	Work pressure	Burst pressure	Bending radius	Length of manufacture
12,5	17,5	10	24	50	25/50/100
18	23,5	8	18	115	25/50/100
24	31	6	12	150	25/50

Length tolerance +/- 2%, inner diameter tolerance +/- 3%
Operating and bursting pressure is valid when used at 20 ° C

AVAILABLE COLORS:





ARMIRANA BAŠTENSKA CREVA CLASSIC PP 6 bar-a

KAREKTERISTIKE:

- Troslojno crevo
- Izrađena od mekog PVC-a
- Ojačana PP filamentom
- Glatke unutrašnjosti i spoljašnosti
- Dobre otpornosti na veliko broj hemikalija
- Oslobođena kadmijuma, barijuma i olova
- Formulacija pogodna za kontakt sa hranom
- UV stabilna
- Temperatura primene od -10°C do +60°C



PRIMENA:

Zalivanje vrtova, bašti, parkova, fudbalskih terena, građevinskih radova itd.

TEHNIČKI PODACI:

I.D. mm	O.D. mm	Radni pritisak	Pritisak pucanja	Radijus savijanja	Dužina Izrade m
12,50	16	6	10	50	25/50/100
18,50	23	4	8	115	25/50
24	31	4	7	150	25/50

Tolerancija dužine +/- 2%, tolerancija unutrašnjeg prečnika +/-3%
Radni i rasprskujući pritisak važi pri upotrebi na 20°C

BOJE IZRADE:





+ REINFORCED GARDEN HOSES CLASSIC PP 6 bar

FEATURES:

- Three-layer hose
- Made of soft PVC
- Reinforced with PP filament
- Smooth interiors and exteriors
- Good resistance to a large number of chemicals
- Cadmium free, barium and lead.
- Formulation suitable for contact with food
- UV stable
- Application temperature from -10 ° C to + 60 ° C

USE:

Watering gardens, orchards, parks, football fields, construction works, etc.



TECHNICAL DATA:

I.D. mm	O.D. mm	Work pressure	Burst pressure	Bending radius	Length of manufacture
12,50	16	6	10	50	25/50/100
18,50	23	4	8	115	25/50
24	31	4	7	150	25/50

Length tolerance +/- 2%, inner diameter tolerance +/- 3%
Operating and bursting pressure is valid when used at 20 ° C

AVAILABLE COLORS:





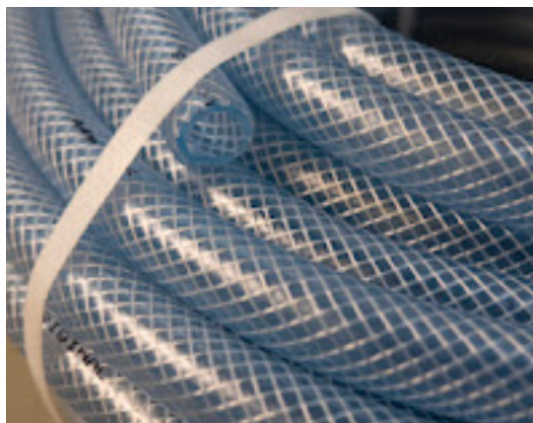
ARMIRANA CREVA V.P. PE 20/60 bar

KAREKTERISTIKE:

- Troslojno crevo
- Izrađena od mekog PVC-a
- Ojačana PES filamentom
- Glatke unutrašnjosti i spoljašnosti
- Dobre otpornosti na veliko broj hemikalija
- Oslobođena kadmijuma, barijuma i olova
- Formulacija pogodna za kontakt sa hranom
- UV stabilna
- Temperatura primene od -10°C do +60°C

PRIMENA:

Kompresori, pumpe, oksigen, prskalice, atomizeri i druge namene u industriji, poljoprivredi i domaćinstvu.

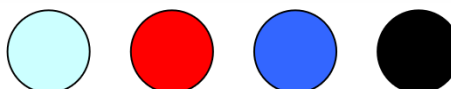


TEHNIČKI PODACI:

I.D.	I.D. mm	O.D. mm	Radni pritisak	Pritisak pucanja	Radius savijanja	Dužina izrade
1/4	6	12	20	60	25	50/100
5/16/	8	14	20	60	30	50/100
3/8	10	16	20	60	55	50/100
1/2	13	19	20	60	65	50/100
1/2	13	22	40	60	70	50
5/8	16	22	15	40	100	50
3/4	19	26	10	20	125	50
3/4	19	28	20	40	130	50
1	25	33	10	20	170	50

Tolerancija dužine +/- 2%, tolerancija unutrašnjeg prečnika +/-3%
Radni i rasprskujući pritisak važi pri upotrebi na 20°C

BOJE IZRADE:





+ REINFORCED HOSES H.P. PE 20/60 bar

FEATURES:

- Three-layer hose
- Made of soft PVC
- Reinforced with PP filament
- Smooth interiors and exteriors
- Good resistance to a large number of chemicals
- Cadmium free, barium and lead.
- Formulation suitable for contact with food
- UV stable
- Application temperature from -10 ° C to + 60 ° C

USE:

Watering gardens, orchards, parks, football fields, construction works, etc.

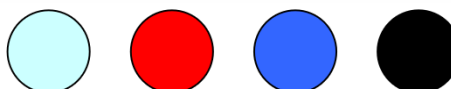


TECHNICAL DATA

I.D	I.D. mm	O.D. mm	Work pressure	Burst pressure	Bending radius	Length of manufacture
1/4	6	12	20	60	25	50/100
5/16	8	14	20	60	30	50/100
3/8	10	16	20	60	55	50/100
1/2	13	19	20	60	65	50/100
1/2	13	22	40	60	70	50
5/8	16	22	15	40	100	50
3/4	19	26	10	20	125	50
3/4	19	28	20	40	130	50
1	25	33	10	20	170	50

Length tolerance +/- 2%, inner diameter tolerance +/- 3%
Operating and bursting pressure is valid when used at 20 ° C

AVAILABLE COLORS:





ŠARENA BAŠTENSKA CREVA

KAREKTERISTIKE:

- Jednoslojno crevo
- Izrađena od mekog PVC-a
- Glatke unutrašnjosti i spoljašnjosti
- Dobre otpornosti na veliko broj hemikalija
- Oslobođena kadmijuma, barijuma i olova
- Formulacija pogodna za kontakt sa hranom
- UV stabilna
- Temperatura primene od -10°C do +60°C



PRIMENA:

Zalivanje vrtova, bašti, parkova, fudbalskih terena, građevinskih radova itd.

TEHNIČKI PODACI:

I.D. mm	O.D. mm	Težina gr/m	Radni pritisak	Pritisak pucanja	Radius savijanja	Dužina izrade
12,5	16	112	7	12	50	50/100
18,5	22,5	188	6	10	115	50
24	29	290	5	8	150	50

Tolerancija dužine +/- 2%, tolerancija unutrašnjeg prečnika +/-3%
Radni i rasprskujući pritisak važi pri upotrebi na 20°C

BOJE IZRADE:





+ COLORFUL GARDEN HOSES

FEATURES:

- Single layer hose
- Made of soft PVC
- Smooth interiors and exteriors
- Good resistance to a large number of chemicals
- Cadmium free, barium and lead
- Formulation suitable for food contact
- UV stable
- Application temperature from -10 ° C to + 60 ° C



USE:

Watering gardens, orchards, parks, football fields, construction works, etc.

TECHNICAL DATA

I.D. mm	O.D. mm	Weight gr	Work pressure	Burst pressure	Bending radius	Length of manufacture
12,5	16	112	7	12	50	50/100
18,5	22,5	188	6	10	115	50
24	29	290	5	8	150	50

Length tolerance +/- 2%, inner diameter tolerance +/- 3%
Operating and bursting pressure is valid when used at 20 ° C

AVAILABLE COLORS:





USISNO POTISNA CREVA

KAREKTERISTIKE:

- Spirala od tvrdog PVC-a zid od elastičnog mekog PVC-a
- Unutrašnja strana glatka, spoljna navojna
- Ojačana tvrdim PVC-om
- Dobra otpornost na abraziju
- Dobre otpornosti na veliko broj hemikalija
- Oslobođena kadmijuma, barijuma i olova
- Formulacija pogodna za kontakt sa hranom
- Non-toxic
- UV stabilna
- Ne gubi presek prilikom savijanja
- Temperatura primene od -10°C do +60°



PRIMENA:

Transport tečnosti kod sistema za navodnjavanje, transport praškastog i granulastog materijala, mleka, vode, alkoholnih i bezalkoholnih pića, razblaženih hemikalija, komunalnih i auto cisterni, cementa, betona, razne vrste aspiracija, zaštita elektrokablova od mehaničkih oštećenja i atmosferskih uticaja itd.

TEHNIČKI PODACI:

I.D. inch	I.D. mm	Radni pritisak bar	Vacuum mbar	Radius savijanja mm	Dužina izrade m
1	25	8	0,750	112	25
	30	7	0,750	135	25
5/4	32	7	0,750	144	25
	35	7	0,750	157	25
6/4	38	6	0,750	171	25
	40	6	0,750	180	25
2	50	5	0,750	225	25
	60	4	0,750	270	25
3	75	4	0,750	337	25
4	100	4	0,750	459	25

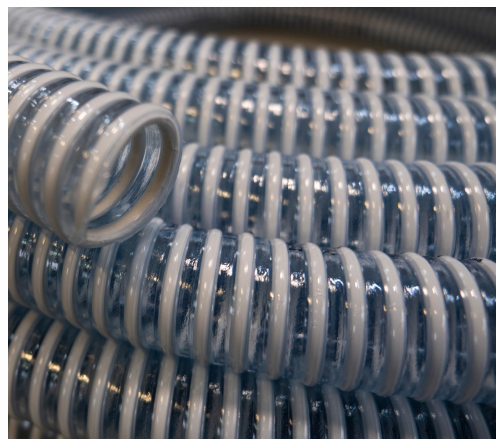
Tolerancija dužine +/- 2%, tolerancija unutrašnjeg prečnika +/-1%
Radni i rasprskujući pritisak važi pri upotrebi na 20°C



+ SUCTION PRESSURE HOSES

FEATURES:

- Hard PVC spiral wall made of elastic soft PVC
- Inner smooth, outer threaded
- Reinforced with hard PVC
- Good abrasion resistance
- Good resistance to a large number of chemicals
- Cadmium free, barium and lead
- Formulation suitable for food contact
- Non-toxic
- UV stable
- It does not lose cross-section when bending
- Application temperature from -10 ° C to + 60 °



USE:

Transport of liquids in irrigation systems, transport of powder and granular material, milk, water, alcoholic and non-alcoholic beverages, diluted chemicals, municipal and tank trucks, cement, concrete, various types of aspirations, Protection of electric cables from mechanical damage and atmospheric influences, etc.

TECHNICAL DATA

I.D. inch	I.D. mm	Work pressure	Vacuum mbar	Bending radius	Length of manufacture
1	25	8	0,750	112	25
	30	7	0,750	135	25
5/4	32	7	0,750	144	25
	35	7	0,750	157	25
6/4	38	6	0,750	171	25
	40	6	0,750	180	25
2	50	5	0,750	225	25
	60	4	0,750	270	25
3	75	4	0,750	337	25
4	100	4	0,750	459	25

Length tolerance +/- 2%, inner diameter tolerance +/- 1%
Operating and bursting pressure is valid when used at 20 ° C



VAGRES CREVA

KAREKTERISTIKE:

- Jednoslojno crevo
- Izrađena od kristalno prozirnog mekog PVC-a
- Glatke unutrašnjosti i spoljašnosti
- Dobre otpornosti na veliko broj hemikalija
- Oslobođena kadmijuma, barijuma i olova.
- Formulacija pogodna za kontakt sa hranom
- UV stabilna
- Temperatura primene od -10°C do +60°C
- Upotreba bez pritiska (bar)



PRIMENA:

Pretakanje raznih tečnosti, vina, piva, sirćeta ,
nivelisanje terena u
građevinarstvu itd.

TEHNIČKI PODACI:

I.D. mm	O.D. mm	Radni pritisak bar	Radijus savijanja	Dužina izrade
4	6	B	15	50/100
5	6,5	E	15	50/100
6	9	Z	18	50/100
8	11		25	50
10	13	P	30	50
12,7	16	R	35	50
15,8	20	I	40	50
19	23,5	T	50	50
25	30		60	50

Tolerancija dužine +/- 2%, tolerancija unutrašnjeg prečnika +/-3%
Radni i rasprskujući pritisak važi pri upotrebi na 20°C



+ VAGRES HOSES

FEATURES:

- Single-layer hose
- Made of crystal clear soft PVC
- Smooth interiors and exteriors
- Good resistance to a large number of chemicals
- Free of cadmium, barium and lead.
- Formulation suitable for food contact
- UV stable
- Application temperature from -10 ° C to + 60 ° C



USE:

Pretakanje raznih tečnosti, vina, piva, sirćeta ,
nivelisanje terena u građevinarstvu itd.

TECHNICAL DATA

I.D. mm	O.D. mm	Work pressure bar	Bending radius	Length of manufacture
4	6	N	15	50/100
5	6,5	O	15	50/100
6	9		18	50/100
8	11	P	25	50
10	13	R	30	50
12,7	16	E	35	50
15,8	20	S	40	50
19	24	S	50	50
25	30	U	60	50

Tolerancija dužine +/- 2%, tolerancija unutrašnjeg prečnika +/-3%
Radni i rasprskujući pritisak važi pri upotrebi na 20°C



ARMIRANA CREVA ZA GORIVO - PETROL

KAREKTERISTIKE:

- Troslojno crevo
- Izrađena od termoplastične gume TPE
- Ojačanje: Jako tkana sintetička vlakna.
- Glatke unutrašnjosti i spoljašnosti
- Dobre otpornosti na naftu i benzin
- Oslobođena kadmijuma, barijuma i olova
- Dobre otpornosti na veliko broj hemikalija
- UV stabilna
- Spoljašnji sloj: NBR/PVC gumena smesa, gladak ili sa tekstilnim otiskom, crno ili u boji po izboru.
- Temperatura primene od -30°C do +100°C

PRIMENA:

Crevo za gorivo je alternativa gumenim crevima zato što je posebo konstruisano za prenos naftnih derivata i ima veliku otpornost na dužu izloženost istim. Takođe nudi odličnu otpornost na habanje, fleksibilnost, vatrootpornost, širok raspon radne temperature i dug životni vek.



TEHNIČKI PODACI:

I.D. mm	O.D. mm	Radni pritisak bar	Pritisak pucanja	Radius savijanja	Dužina izrade
5,5	12	20	60	30	10/25/100
7,5	14	20	60	55	10/25/100
9,5	15	20	60	65	10/25/100

Tolerancija dužine +/- 2%, tolerancija I.D. prečnika +/-3%, tolerancija težine +/-5%
Radni i rasprskujući pritisak važi pri upotrebi na 20°C



+ REINFORCED FUEL HOSES

FEATURES:

- Three-layer hose
- Made of thermoplastic rubber TPE
- Reinforced with PES filament
- Cadmium free, barium and lead
- Smooth interiors and exteriors
- Good resistance to oil and gasoline
- Good resistance to a large number of chemicals
- Outer layer: NBR / PVC rubber compound, smooth or with textile print, black or in the color of your choice.
- UV stable
- Application temperature from -30 ° C to + 100 ° C

USE:

The fuel hose is an alternative to rubber hoses because it is specially designed for the transfer of petroleum products and has great resistance to prolonged exposure to the same. Also offers excellent abrasion resistance, flexibility, fire resistance, wide operating temperature range and long service life.



TECHNICAL DATA:

I.D. mm	O.D. mm	Work pressure bar	Burst pressure	Bending radius	Length of manufacture
5,5	12	20	60	30	10/25/100
7,5	14	20	60	55	10/25/100
9,5	15	20	60	65	10/25/100

Tolerancija dužine +/- 2%, tolerancija I.D. prečnika +/-3%, tolerancija težine +/-5%
Radni i rasprskujući pritisak važi pri upotrebi na 20°C



CREVA ZA MUZILICE

KAREKTERISTIKE:

- Jednoslojno crevo
- Izrađena od prozirnog mekog PVC-a
- Glatke unutrašnjosti i spoljašnosti
- Oslobođena kadmijuma, barijuma i olova
- Formulacija pogodna za kontakt sa hranom
- Non-toxic
- UV stabilna
- Temperatura primene od -30°C do +60°C



PRIMENA:

Namenjena su za korišćenje prilikom mašinske muže

TEHNIČKI PODACI:

I.D. mm	O.D. mm	Radijus savijanja	Dužina izrade
8	14	15	50/100
13	22	15	50/100
16	24	18	50/100

Tolerancija dužine +/- 2%, tolerancija I.D. prečnika +/-3%, tolerancija težine +/-5%



+ MILKING HOSES

FEATURES:

- Single layer hose
- Made of transparent soft PVC
- Smooth interiors and exteriors
- Cadmium free, barium and lead
- Formulation suitable for food contact
- Non-toxic
- UV stable
- Application temperature from -30 ° C to + 60 ° C



USE:

They are intended for use during machine milking

TECHNICAL DATA:

I.D. mm	O.D. mm	Bending radius	Length of manufacture
8	14	15	50/100
13	22	15	50/100
16	24	18	50/100

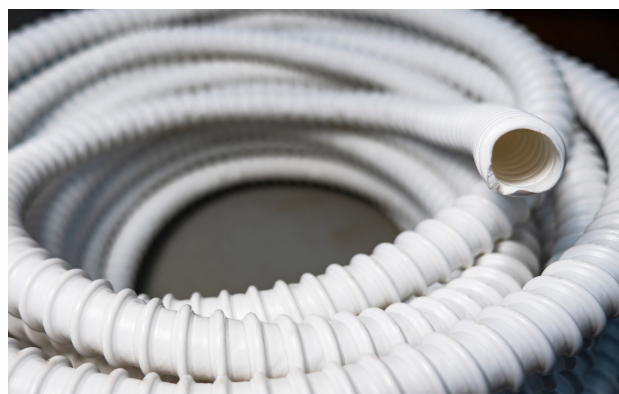
Length tolerance +/- 2%, tolerance I.D. diameter +/- 3%, weight tolerance +/- 5%



+ VAKUUM CREVA

KAREKTERISTIKE:

- Izuzetno fleksibilno i lagano crevo
- Spirala od tvrdog PVC-a zid od elastičnog mekog PVC-a
- Unutrašnja strana glatka, spoljna navojna
- Ojačana tvrdim PVC-om
- Oslobođena kadmijuma, barijuma i olova
- Dobra otpornost na abraziju
- Dobre otpornosti na veliko broj hemikalija
- Formulacija pogodna za kontakt sa hranom
- Non-toxic
- UV stabilna
- Ne gubi presek prilikom savijanja
- Poluprečnik zakrivljenosti približno dvostruko veći od njegovog spoljnog prečnika
- Temperatura primene od -15°C do +55°



PRIMENA:

- Prvenstveno se koriste kao usisna creva (razne vrste aspiracija)
- Kao kanal za gasove i za abrazivnu prašinu, prah, vlakna
- U poljoprivredi za navodnjavanje, aplikaciju đubriva, insekticida itd
- Sanitarne instalacije, vodovod, Crevo za dovod vazduha
- Crevo za ekstrakciju, mašina za čišćenje podova, zaštitnu kablova (poseban tip na zahtev)
- Crevo za kondez klima uređaja

TEHNIČKI PODACI:

I.D. inch	I.D. mm	Radni pritisak bar	Vacuum mbar	Radius savijanja mm	Dužina izrade m
	16	1,00	0,300	25	25
	20	1,00	0,290	40	25
1	25	0,90	0,250	65	25
	30	0,90	0,250	72	25
5/4	32	0,85	0,220	80	25
	35	0,80	0,200	88	25
6/4	38	0,75	0,200	93	25
	40	0,70	0,200	100	25
2	50	0,50	0,200	122	25
	60	0,45	0,180	146	25
3	75	0,40	0,150	175	25
4	100	0,28	0,130	200	25

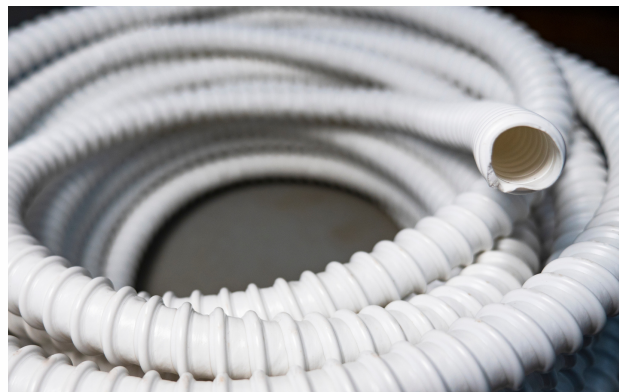
BOJE: Providna, providna sa belom spiralom , crna, siva ili po zahtevu.



+ VACUUM HOSES

FEATURES

- Flexible hose consisting of a hard PVC spiral integrated into a soft PVC wall
- Smooth interiors
- Cadmium free, barium and lead
- Good flexibility at temperatures from -10C to + 60C
- Good abrasion resistance
- Resistance to a large number of chemicals, which allows for wide application
- They are characterized by low weight and do not lose cross-section when bending



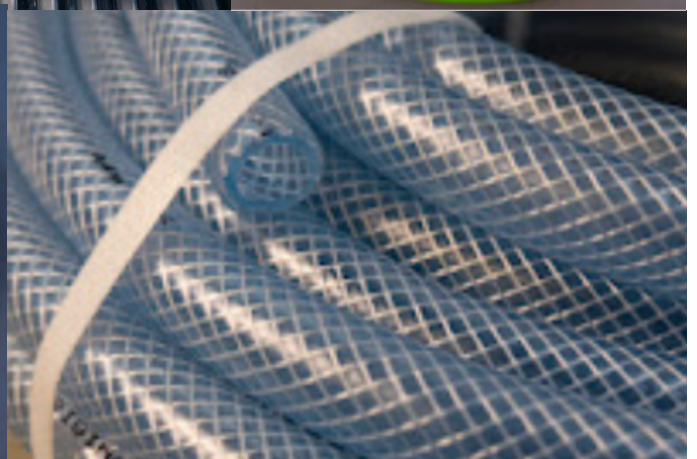
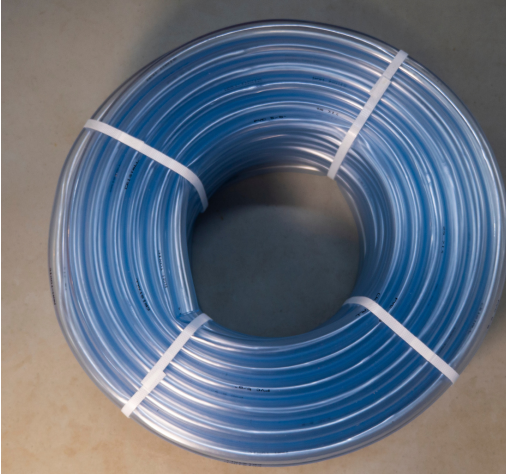
USE

- Primarily used as suction hoses (various types of aspirations)
- As a channel for gases and for abrasive dust, dust, fibers
- In agriculture for irrigation, application of fertilizers, insecticides, etc.
- Sanitary installations, plumbing, air supply hose
- Extraction hose, floor cleaning machine, protective cables (special type on request)
- Air conditioning condensate hose

TECHNICAL DATA

I.D. inch	I.D. mm	Work pressure	Vacuum mbar	Bending radius	Length of manufacture
	16	1,00	0,300	25	25
	20	1,00	0,290	40	25
1	25	0,90	0,250	65	25
	30	0,90	0,250	72	25
5/4	32	0,85	0,220	80	25
	35	0,80	0,200	88	25
6/4	38	0,75	0,200	93	25
	40	0,70	0,200	100	25
2	50	0,50	0,200	122	25
	60	0,45	0,180	146	25
3	75	0,40	0,150	175	25
4	100	0,28	0,130	200	25

COLORS: Transparent, transparent with white spiral, black, gray, or on request.





Narodne revolucije 60/a, Banatsko Novo Selo



+381(0) 63 80 90 138



coronabns@gmail.com